

WORLDWIDE SHOWPIECE IN IDENTIFICATION TECHNOLOGY

DIRECT PRINT MODULES



QUALITY. TRADITION. INNOVATION.

» INNOVATIVE LABELLING TECHNOLOGY

For a world spinning round faster and faster.
For commodity flows becoming more and more complex.



As a company which has been built steadily on firm foundations, we have gained an unassailable market presence all over the world: with unsurpassed product variety and a constantly rising success curve – for more than 90 years.

We develop, manufacture and market multifunctional label printing and labelling systems as stand-alone modules, built-in modules, direct printing units offering special solutions in bar code and plain text printing in all conceivable designs by the thermal direct or thermal transfer process – carefully supplemented by convenient design software, a mass of practical accessories and matching consumables.

Clients from nearly all branches of industry appreciate us as competent partners, capable of thinking holistically towards total solutions right through all phases of a project – from planning through manufacture, right up to servicing and customer service. Customer proximity, knowledge and innovative strength have been a tradition with us for generations, and day in, day out they create the foundation for the development and production of our high-performance machines.

» Quality Policy:
Integrated element of our company strategy

Our printing systems thus guarantee optimized value-creation processes right along the entire supply chain. And that is no accident – the uncompromising high quality of all our systems has been our highest priority since time immemorial. Right up to point at which a product leaves our premises, our quality management system, based on DIN EN ISO 9001:2008, monitors all working processes in accordance with strict test guidelines

» Maintenance, Service and Support:
Easy to get hold of and obtainable in a flash.

Night and day our systems are working at high-performance level. Regular servicing tasks and preventive measures rule out the possibility of loss of production and guarantee long life for your machines.

The factors that have become our machines' trademark also apply to the quality of our customer service. What you can confidently expect from us is speed, total commitment and high quality.

In case of any software update you might wish or for preparing a service contract tailored to your needs, our helpful team is always ready to lend its support.



» DYNACODE SERIES

- Direct marking of foil packages
- Intermittent and continuous mode selectable
- Printing real-time data and automatic update of best before date
- Print width up to 128 mm
- Best print resolution in 300 dpi
- Up to 900 m transfer ribbon for long production running times
- Ribbon remainder indication for fast ribbon change
- Mechanisms for optimal transfer ribbon utilization
- All common interfaces for fast data exchange
- High ribbon saving of 1 mm between the prints
- Minimum of wear parts



Thermal transfer direct printing systems are the non plus ultra for applications in the food industry, confectionery industry, pharmaceuticals industry or the hardware industry, to cite several examples. The most frequent application area is the marking of flexible foil packaging or boxes. The Dynacode convinces not only through the easy to change ribbon cassette but also due to the separate control unit and through integration in virtually all horizontal and vertical packaging systems. With a print resolution of 300 dpi, printing of graphics and company logos is no problem, and with a print speed of up to 800 mm/s virtually all customer desires can be satisfied.

» High-quality marking at low operating costs

Through the use of transfer ribbons with a length of up to 900 m, for Dynacode less frequent ribbon replacement is enabled. Thanks to the high capacity of the ribbon operating costs are directly reduced. For optimal transfer ribbon utilization, in addition to standard ribbon save, shift and save start ribbon save are also available. Through the ribbon save between the individual layouts can be reduced to 1 mm via the length of roll. Overprints are prevented and a consistently high print quality is guaranteed. This foil saving automation reduces standstill times and enables an even higher capacity utilization of the transfer ribbons.

» Maximum protection in harsh production conditions

The splash-proof version of the Dynacode offers additional protection in harsh production environments. The optionally available version additionally dispenses with bulky and bothersome covers to protect the device, as neither print module nor control unit must be dismantled or covered during the cleaning process. This means that production downtimes are even further reduced. The cleaning cassette necessary for this can simply replace the ribbon cassette within seconds. The splash-proof Dynacode version is ideally suited for marking hygienic products and for printing in production environments where wet cleaning is required, such as in dairies or coffee roasting plants.

» Excellent flexibility

The Dynacode series provides best flexibility which permits switching between intermittent and continuous mode in a simple way. Printing continuously the printhead stands still while the packaging foil is guided through; printing is possible as well during operation of packaging machine. Printing intermittent the printhead moves in a programmable moving pattern over the foil in order to move back to starting position. The print is effected during the standstill of machine for some instants, frequently while a packing is filled.

» Print speed and cycle time

Thanks to the extremely light and precise printhead guiding, the Dynacode achieves an extremely high cycle time with the intermittent version as well as with the continuous version. Thanks to a floating printhead support slight parallelism differences of counter-pressure plate / counter-pressure roller can be adjusted. Variable data, lot numbers, date, time in real time, is printed through an in-house developed special software program that enables extremely fast data preparation.



» Mounting frames for continuous mode

Mounting frames with different dimensions for the simple integration of the system into almost all production lines, depending on installation position for intermittent as well as for continuous mode are available.



» Left and right hand versions

The offered right and left hand version permit almost unlimited horizontal or vertical installation possibilities.



» Interfaces

The Dynacode series is equipped with standard serial, parallel, USB and LAN connection.

» TECHNICAL DATA

» DYNACODE SERIES

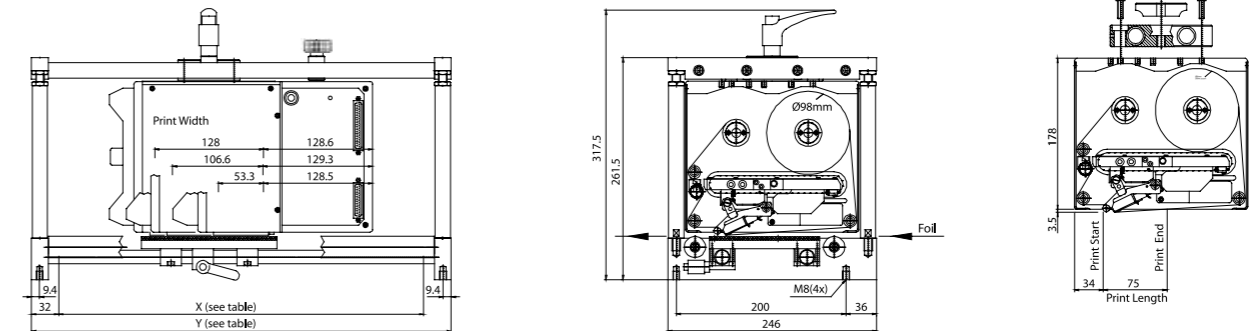
	DYNACODE 53	DYNACODE 107	DYNACODE 128
PRINT			
Max. Print Width	53.3 mm	106.6 mm	128 mm
Max. Print Length	6,000 mm	3,000 mm	3,000 mm
Continuous Mode	75 mm	75 mm	75 mm
Intermittent Mode	customized	customized	customized
Resolution	300 dpi	300 dpi	300 dpi
Print Speed			
Continuous Mode	50 – 800 mm/s	50 – 600 mm/s	50 – 450 mm/s
Intermittent Mode	50 – 600 mm/s	50 – 600 mm/s	50 – 600 mm/s
Max. Back Speed	600 mm/s (intermittent mode only)	600 mm/s (intermittent mode only)	600 mm/s (intermittent mode only)
Printhead	Corner Type	Corner Type	Corner Type
Max. Print Memory	16 MB	16 MB	16 MB
CF Card	128 MB, 256 MB, 512 MB, 1024 MB, 1 GB, 2 GB	128 MB, 256 MB, 512 MB, 1024 MB, 1 GB, 2 GB	128 MB, 256 MB, 512 MB, 1024 MB, 1 GB, 2 GB
DIMENSIONS (WIDTH x HEIGHT x DEPTH)			
Print Mechanics			
Without Mounting Frame	204 mm x 180 mm x 234 mm	204 mm x 180 mm x 290 mm	204 mm x 180 mm x 312 mm
With Mounting Frame	depending on passage width	depending on passage width	depending on passage width
Control Unit	240 mm x 125 mm x 332 mm	240 mm x 125 mm x 332 mm	240 mm x 125 mm x 332 mm
Connecting Cable to Mechanics	2.5 m	2.5 m	2.5 m
WEIGHT			
Print Mechanics	9.5 kg	11 kg	11.7 kg
Electronics with Cable	5.5 kg	5.5 kg	5.5 kg
FONTS			
Vector Fonts	Helvetica Bold, Helvetica Roman, Swiss light, Baskerville, Brush Script, Monospace	Helvetica Bold, Helvetica Roman, Swiss light, Baskerville, Brush Script, Monospace	Helvetica Bold, Helvetica Roman, Swiss light, Baskerville, Brush Script, Monospace
Bitmap Fonts	6	6	6
Proportional Fonts	6	6	6
BAR CODES			
1D Bar Codes	CODABAR, Code 128A, Code 128B, Code 2/5 interleaved, Code 39, Code 39 extended, Code 93, EAN 13, EAN 8, EAN ADD ON, GS1-128 (EAN 128), Identcode (German Post Code), ITF 14, Leitcode (German Post Code), Pharmaco, PZN Code, UPC-A, UPC-E	CODABAR, Code 128A, Code 128B, Code 2/5 interleaved, Code 39, Code 39 extended, Code 93, EAN 13, EAN 8, EAN ADD ON, GS1-128 (EAN 128), Identcode (German Post Code), ITF 14, Leitcode (German Post Code), Pharmaco, PZN Code, UPC-A, UPC-E	CODABAR, Code 128A, Code 128B, Code 2/5 interleaved, Code 39, Code 39 extended, Code 93, EAN 13, EAN 8, EAN ADD ON, GS1-128 (EAN 128), Identcode (German Post Code), ITF 14, Leitcode (German Post Code), Pharmaco, PZN Code, UPC-A, UPC-E
2D Bar Codes	CODABLOCK F, DataMatrix, MAXICODE, PDF417, QR Code	CODABLOCK F, DataMatrix, MAXICODE, PDF417, QR Code	CODABLOCK F, DataMatrix, MAXICODE, PDF417, QR Code
Composite Bar Codes	GS1 DataBar Expanded, GS1 DataBar Limited, GS1 DataBar Omnidirectional, GS1 DataBar Stacked, GS1 DataBar Stacked Omnidirectional, GS1 DataBar Truncated	GS1 DataBar Expanded, GS1 DataBar Limited, GS1 DataBar Omnidirectional, GS1 DataBar Stacked, GS1 DataBar Stacked Omnidirectional, GS1 DataBar Truncated	GS1 DataBar Expanded, GS1 DataBar Limited, GS1 DataBar Omnidirectional, GS1 DataBar Stacked, GS1 DataBar Stacked Omnidirectional, GS1 DataBar Truncated
PNEUMATIC CONNECTION			
	min. 6 bar dry and free from oil	min. 6 bar dry and free from oil	min. 6 bar dry and free from oil
INTERFACES			
Serial	RS-232C (max. 115,200 baud)	RS-232C (max. 115,200 baud)	RS-232C (max. 115,200 baud)
Parallel	Centronics	Centronics	Centronics
USB	1.0	1.0	1.0
Ethernet/LAN	10/100 Base-T	10/100 Base-T	10/100 Base-T
TRANSFER RIBBON			
Core Diameter	25.4 mm / 1"	25.4 mm / 1"	25.4 mm / 1"
Max. Length	900 m (Ø 98 mm)	600 m (Ø 82 mm)	450 m (Ø 75 mm)
Coating	outside / inside*	outside / inside*	outside / inside*
CONNECTION VALUES			
Nominal Voltage	110 V – 230 V / 50 – 60 Hz	110 V – 230 V / 50 – 60 Hz	110 V – 230 V / 50 – 60 Hz
Nominal Current	230 V / 1.5 A – 110 V / 3 A	230 V / 1.5 A – 110 V / 3 A	230 V / 1.5 A – 110 V / 3 A
Fuse Values	230 V / 2 AT – 110 V / 4 AT	230 V / 2 AT – 110 V / 4 AT	230 V / 2 AT – 110 V / 4 AT
OPERATING CONDITIONS			
Temperature	5 – 40 °C	5 – 40 °C	5 – 40 °C
Max. Relative Humidity	80 % (non condensing)	80 % (non condensing)	80 % (non condensing)

Technical data subject to change

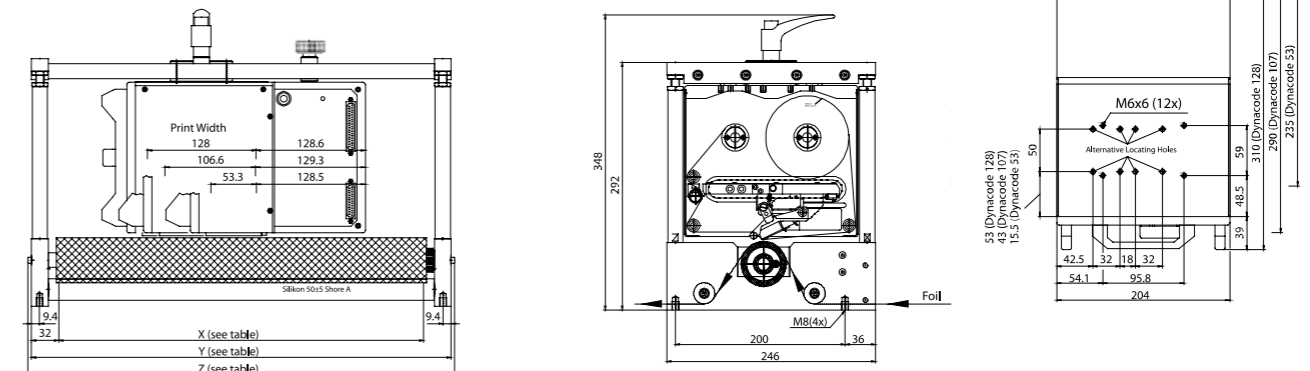
*optional

» PRINT MECHANICS VERSIONS

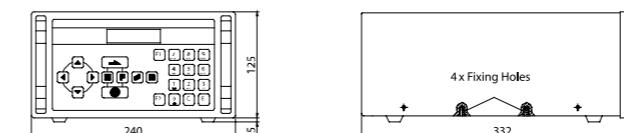
» Dynacode print mechanics right hand version, intermittent mode



» Dynacode print mechanics right hand version, continuous mode



» Dynacode control unit



Dimensions in mm
Technical data subject to change
Illustrations for left hand versions on demand

» DPM III xi SERIES

- Cost reduction by transfer ribbon saving
- More than 20 different versions available
- Cable outlet above or on the side
- Left and right hand versions
- Print speed up to 450 mm/s
- Flexible marking such as best before date, bar codes, complex graphics or linked data from external data sources



The intermittent working DPM III xi is a high-resolution direct printing mechanism for installation in cycled packaging machines in all application areas, such as medical technology, pharmaceuticals industry and food industry. Thanks to its compact design, the DPM III xi can be integrated in any position in packaging machines, foil and pillow bag systems, as well as in product marking systems. For the intermittent process printing is executed while the foil is standing still. The DPM III xi has different print widths and lengths which enables a printable surface of 128 x 630 mm.

Without any difficulties applications with large-scale printing content or marking of different small products can be realised with DPM III xi by using the function 'print several columns'.

» High quality product marking

The DPM III xi direct print module enables high-quality marking on flexible packaging with maximum availability and low operating costs. Due to the high flexibility and transfer ribbon length the standstill times for production conversions are reduced to a minimum. The system is ideally suited for printing variable data, such as date, time, lot number, list of ingredients, and logos on flexible foil packaging or boxes.

» Layouts with variable data

The Labelstar PLUS design software enables to produce multi-layer layouts in relative short time. Integrating popular 1D, 2D and composite bar codes extending to database connections and complex variables such as SAP connection and OLE functions can be easily implemented with Labelstar PLUS.



» Optional accessories

For extraordinary requirements more than 20 different versions of counter-pressure plates, in all available print widths and print lengths, adapted to each direct print module of the DPM III xi series are available. Owing to the optional cable outlet above the DPM III xi can be integrated into almost all packaging machines. The DPM III xi can be operated by input at the control unit, with an external keyboard or via PC.



» Interfaces

The DPM III xi series is equipped with standard serial, parallel and USB connection. For network connection an internal LAN interface is available.



» Left and right hand versions

The offered right and left hand version permit almost unlimited horizontal or vertical installation possibilities.



» Unsurpassed variety

With three different print widths of 53 mm, 107 mm and 128 mm and seven different print lengths up to max. 630 mm the DPM III xi series is one of the most variable solution for direct printing.



» Control Unit

With the control unit the configuration of the printing system can be changed in simplest way. Layouts saved on a Compact Flash card can be retrieved and printed by using the foil keyboard as well as an external alphanumeric keyboard.

» TECHNICAL DATA

» DPM III xi SERIES

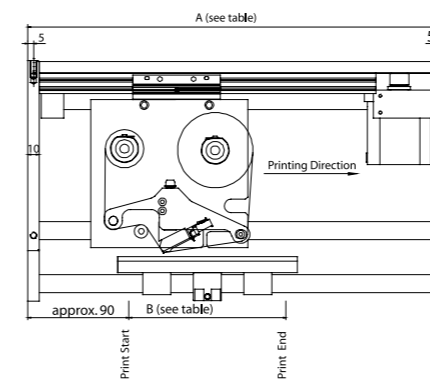
	DPM III xi53	DPM III xi107	DPM III xi128
PRINT			
Max. Print Width	53.3 mm	106.6 mm	128 mm
Print Lengths	60 mm, 140 mm, 240 mm, 340 mm, 447 mm, 570 mm, 630 mm	60 mm, 140 mm, 240 mm, 340 mm, 447 mm, 570 mm, 630 mm	60 mm, 140 mm, 240 mm, 340 mm, 447 mm, 570 mm, 630 mm
Resolution	300 dpi	300 dpi	300 dpi
Print Speed	50 – 450 mm/s*	50 – 450 mm/s*	50 – 400 mm/s*
Max. Back Speed	50 – 500 mm/s*	50 – 500 mm/s*	50 – 400 mm/s*
Printhead	Corner Type	Corner Type	Corner Type
Max. Print Memory	16 MB	16 MB	16 MB
CF Card	128 MB, 256 MB, 512 MB, 1024 MB, 1 GB, 2 GB	128 MB, 256 MB, 512 MB, 1024 MB, 1 GB, 2 GB	128 MB, 256 MB, 512 MB, 1024 MB, 1 GB, 2 GB
DIMENSIONS			
Print Mechanics	Print Length + 230 mm x 170 mm x 260 mm	Print Length + 230 mm x 170 mm x 315 mm	Print Length + 230 mm x 170 mm x 335 mm
Control Unit	285 mm x 130 mm x 350 mm	285 mm x 130 mm x 350 mm	285 mm x 130 mm x 350 mm
Connecting Cable to Mechanics	2.5 m	2.5 m	2.5 m
WEIGHT			
Print Mechanics	7.5 kg – 23 kg (depending on print length and print width)	7.5 kg – 23 kg (depending on print length and print width)	7.5 kg – 23 kg (depending on print length and print width)
Electronics with Cable	10.5 kg	10.5 kg	10.5 kg
FONTS			
Vector Fonts	Helvetica Bold, Helvetica Roman, Swiss light, Baskerville, Brush Script, Monospace	Helvetica Bold, Helvetica Roman, Swiss light, Baskerville, Brush Script, Monospace	Helvetica Bold, Helvetica Roman, Swiss light, Baskerville, Brush Script, Monospace
Bitmap Fonts	6	6	6
Proportional Fonts	6	6	6
BAR CODES			
1D Bar Codes	CODABAR, Code 128A, Code 128B, Code 2/5 interleaved, Code 39, Code 39 extended, Code 93, EAN 13, EAN 8, EAN ADD ON, GS1-128 (EAN 128), Identcode (German Post Code), ITF 14, Leitcode (German Post Code), Pharmacode, PZN Code, UPC-A, UPC-E	CODABAR, Code 128A, Code 128B, Code 2/5 interleaved, Code 39, Code 39 extended, Code 93, EAN 13, EAN 8, EAN ADD ON, GS1-128 (EAN 128), Identcode (German Post Code), ITF 14, Leitcode (German Post Code), Pharmacode, PZN Code, UPC-A, UPC-E	CODABAR, Code 128A, Code 128B, Code 2/5 interleaved, Code 39, Code 39 extended, Code 93, EAN 13, EAN 8, EAN ADD ON, GS1-128 (EAN 128), Identcode (German Post Code), ITF 14, Leitcode (German Post Code), Pharmacode, PZN Code, UPC-A, UPC-E
2D Bar Codes	CODABLOCK F, DataMatrix, MAXICODE, PDF417, QR Code	CODABLOCK F, DataMatrix, MAXICODE, PDF417, QR Code	CODABLOCK F, DataMatrix, MAXICODE, PDF417, QR Code
Composite Bar Codes	GS1 DataBar Expanded, GS1 DataBar Limited, GS1 DataBar Omnidirectional, GS1 DataBar Stacked, GS1 DataBar Stacked Omnidirectional, GS1 DataBar Truncated	GS1 DataBar Expanded, GS1 DataBar Limited, GS1 DataBar Omnidirectional, GS1 DataBar Stacked, GS1 DataBar Stacked Omnidirectional, GS1 DataBar Truncated	GS1 DataBar Expanded, GS1 DataBar Limited, GS1 DataBar Omnidirectional, GS1 DataBar Stacked, GS1 DataBar Stacked Omnidirectional, GS1 DataBar Truncated
PNEUMATIC CONNECTION			
	min. 6 bar dry and free from oil	min. 6 bar dry and free from oil	min. 6 bar dry and free from oil
INTERFACES			
Serial	RS-232C (max. 19,200 baud)	RS-232C (max. 19,200 baud)	RS-232C (max. 19,200 baud)
Parallel	Centronics	Centronics	Centronics
USB	1.0	1.0	1.0
Ethernet/LAN	10/100 Base-T	10/100 Base-T	10/100 Base-T
TRANSFER RIBBON			
Core Diameter	25.4 mm / 1"	25.4 mm / 1"	25.4 mm / 1"
Max. Length	600 m (Ø 85 mm)	600 m (Ø 85 mm)	600 m (Ø 85 mm)
Coating	outside / inside	outside / inside	outside / inside
CONNECTION VALUES			
Nominal Voltage	230 V / 50 – 60 Hz	230 V / 50 – 60 Hz	230 V / 50 – 60 Hz
Standard	115 V / 50 – 60 Hz	115 V / 50 – 60 Hz	115 V / 50 – 60 Hz
Option	230 V / 1.5 A – 110 V / 3 A	230 V / 1.5 A – 110 V / 3 A	230 V / 1.5 A – 110 V / 3 A
Nominal Current	230 V / 2 AT – 110 V / 4 AT	230 V / 2 AT – 110 V / 4 AT	230 V / 2 AT – 110 V / 4 AT
Fuse Values			
OPERATING CONDITIONS			
Temperature	5 – 40 °C	5 – 40 °C	5 – 40 °C
Max. Relative Humidity	80 % (non condensing)	80 % (non condensing)	80 % (non condensing)

Technical data subject to change

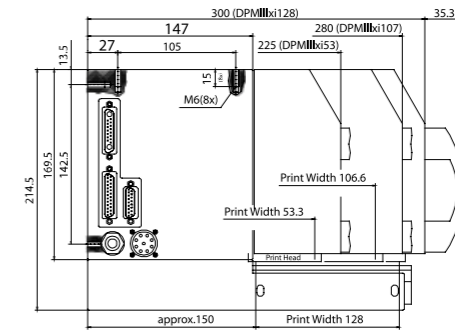
*depending on installation position

» PRINT MECHANICS VERSIONS

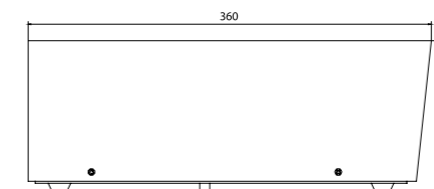
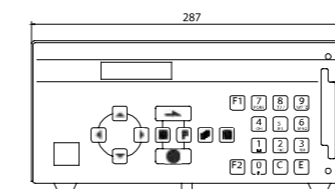
» DPM III xi print mechanics right hand version



B Print Length:	60	140	240	340	447	570	630
A Machine Length:	290	370	470	570	678.5	800	860



» DPM III xi control unit



Dimensions in mm
Technical data subject to change
Illustrations for left hand versions on demand

» TOUCH PANEL

The direct print modules are easy to operate via a user-oriented colour panel PC. From operation and observation near the machine to navigation and regulation – with the Touch Panel we offer a possibility that is ideally suited for production processes in harsh industrial environments. When using the Touch Panel you always profit from convenient operation via touch screen or foil keyboard.

This is not only practical and time-saving it also prevents input errors. The integrated diagnostics system supports operability and informs the user of a pending transfer ribbon change or the remaining duration of the current print job.

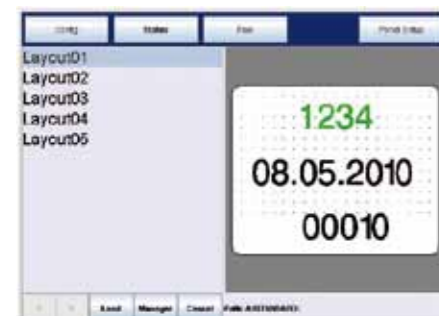
With help from the Touch Panel it is possible to configure and monitor one or several (max. 4) printing devices and/or printing systems. This is valid for the setting of parameters as well as for monitoring current print orders. All parameters which can be set at the printers function menu can be configured and changed at the Touch Panel, too. The connection to the control system is made by an Ethernet interface.



Network setup



Information about machine status



Layout preview



Entry of variable texts

» TRANSFER RIBBONS

Whether desktop printers or direct printing systems, whether flat type or corner edge printheads – our assortment of thermal transfer ribbon supplies the requisite quality for each device type. Our thermal transfer ribbons are available in different widths from 35 mm to 220 mm and offer many design possibilities through an extensive selection of colours.

» Standard (wax)

These transfer ribbons were developed especially for printing bar codes, texts and graphics with exact contours. They are versatile usable, from paper to foil. They have an acceptable rubbing resistance.

- Valentin 1700 Standard / Corner Edge

» Premium (wax/resin)

These transfer ribbons were developed especially for printing bar codes, texts and graphics with high resolution. Even with high print speeds ribbons of wax/resin mixture offer very good print quality no matter using paper or foil. They have an excellent rubbing and scratching resistance.

- Valentin 1706 Premium / Corner Edge
- Valentin 1708 Premium / Corner Edge



» Special (resin)

These resin ribbons were developed especially for printing type plates with excellent rubbing and scratching resistance. They are used only on plastic labels such as polyester or polyethylene. These ribbons are partially heat resistant up to approx. 250 °C (482 °F).

- Valentin 1707 Special / Corner Edge



» LABELSTAR PLUS

DESIGN SOFTWARE

With us you are fit for the requirements of tomorrow. For almost 20 years Carl Valentin GmbH develops and sells professional software for graphic layout creation. These experiences form the firm components of our worldwide successful design software Labelstar PLUS. Therefore you can also profit from this unique advantage to get printing systems and design software from one hand – made by Valentin.



» Efficiency and Functionality

Labelstar PLUS is the optimal extension to your Valentin printing system. By the precise WYSIWYG display you can comfortably create your layouts on the screen. The look & feel surface guarantees a short training period. Due to its modular construction Labelstar PLUS can be individually adapted to your needs. Already the base version provides all possibilities for designing layouts. Labelstar PLUS supports Windows TrueType fonts as well as printer build-in fonts. Import possibilities for all common raster and vector graphic formats are available.

» Languages

Chinese, Czech, Danish, Dutch, English, Finnish, French, German, Italian, Polish, Portuguese, Russian, Spanish, Turkish

» Supported Operating Systems

Windows 7
Windows Vista
Windows XP
Windows 2000
Windows 2003/Server



» NETSTAR PLUS

PRINTING PROCESS AND CONTROL SYSTEM

» Netstar PLUS is the innovative link between production control and printing process.

The flexible structure of Netstar PLUS enables to adapt the system particularly to the needs of customers. Netstar PLUS contains both the print control system as well as print process control. As print control system Netstar PLUS communicates directly with superordinated production control systems or receives control data from external system components. Manual entries are possible, too. The received control data is prepared from the print control system and if necessary supplemented with further data and then passed on to the print process control.

The print process control loads the required layouts of the printers and if necessary supplements the data that was handed over from the printing control system. Apart from printing systems further system components can be activated or control files created. Thereby also other vendors' systems or external test systems can be merged into the printing process. Due to the possibility of printer supervision and the associated direct input of data at the printer, a PC at the input place is not necessary. This reduces acquisition and maintenance costs and solves problems arising under difficult environmental conditions.

» CONFIG TOOL

CONFIGURATION SOFTWARE

With the ConfigTool our printing systems and Touch Panels can be configured and updated. Alternatively the configuration of devices can be made by parallel, serial, USB or network interface. The ConfigTool facilitates selecting, changing and transferring all common parameters and options. Devices without LCD display can be configured comfortably and without difficulties in the appropriate dialog windows. The configuration of one and/or several devices can be saved in the printer configuration file.

» Further products of our delivery programme
Label printers, print modules and labels



Label Printers
e.g. Vita II Series



Print Modules
e.g. SPX Series



Label Fabrication

